

MY ROMANCE

RODGERS & HART
(ARR.: DAVE PETERSON)

STANDARD TUNING

♩ = 80

Chord diagrams for the first system:

- Db 9**: 4th fret, 1st string (x), 2nd string (x), 3rd string (2), 4th string (3), 5th string (5), 6th string (7)
- Bb Maj7**: 6th fret, 1st string (x), 2nd string (x), 3rd string (2), 4th string (3), 5th string (5), 6th string (7)
- Cm7**: 3rd fret, 1st string (x), 2nd string (x), 3rd string (2), 4th string (3), 5th string (5), 6th string (7)
- Dm7**: 5th fret, 1st string (x), 2nd string (x), 3rd string (2), 4th string (3), 5th string (5), 6th string (7)
- Db dim13**: 3rd fret, 1st string (x), 2nd string (x), 3rd string (2), 4th string (3), 5th string (5), 6th string (7)

Musical notation for the first system (measures 1-6). Lyrics: Myro- mance mance does- n't have to have a le. Includes guitar tablature below the staff.

Chord diagrams for the second system:

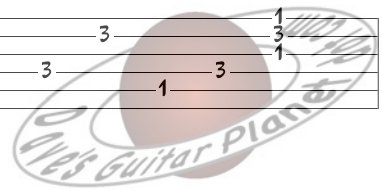
- Cm7**: 3rd fret, 1st string (x), 2nd string (x), 3rd string (2), 4th string (3), 5th string (5), 6th string (7)
- F7**: 3rd fret, 1st string (x), 2nd string (x), 3rd string (2), 4th string (3), 5th string (5), 6th string (7)
- Bb Maj7**: 6th fret, 1st string (x), 2nd string (x), 3rd string (2), 4th string (3), 5th string (5), 6th string (7)
- Gm**: 3rd fret, 1st string (x), 2nd string (x), 3rd string (2), 4th string (3), 5th string (5), 6th string (7)
- Gm/Maj7**: 3rd fret, 1st string (x), 2nd string (x), 3rd string (2), 4th string (3), 5th string (5), 6th string (7)

Musical notation for the second system (measures 7-12). Lyrics: moon ris- ing in sky. My ro- mance does- n't Nor a dance to a. Includes guitar tablature below the staff.

Chord diagrams for the third system:

- Gm7**: 3rd fret, 1st string (x), 2nd string (x), 3rd string (2), 4th string (3), 5th string (5), 6th string (7)
- G7**: 3rd fret, 1st string (x), 2nd string (x), 3rd string (2), 4th string (3), 5th string (5), 6th string (7)
- Cm7**: 3rd fret, 1st string (x), 2nd string (x), 3rd string (2), 4th string (3), 5th string (5), 6th string (7)
- F**: 3rd fret, 1st string (x), 2nd string (x), 3rd string (2), 4th string (3), 5th string (5), 6th string (7)
- Bb Maj7**: 6th fret, 1st string (x), 2nd string (x), 3rd string (2), 4th string (3), 5th string (5), 6th string (7)
- Bb 7**: 6th fret, 1st string (x), 2nd string (x), 3rd string (2), 4th string (3), 5th string (5), 6th string (7)

Musical notation for the third system (measures 13-18). Lyrics: need a blue la- goon stand- ing re- by. No. Includes guitar tablature below the staff.



E♭ Maj7/G

A♭ 9

B♭ Maj7

B♭ 7

E♭ Maj7/G

A♭ 9

10

month of May, no twink- ling

B♭ Maj7

E m7♭5 sus

A7♭9

Dm7

D♭ 9

13

stars. No hide- a- way, no

C11

C7

Cm11

F

²
Fm13

B♭ 7

16

soft gui- tars. Myro- frain. Wide a-



E \flat Maj7



Gm7(#5)



Cm7



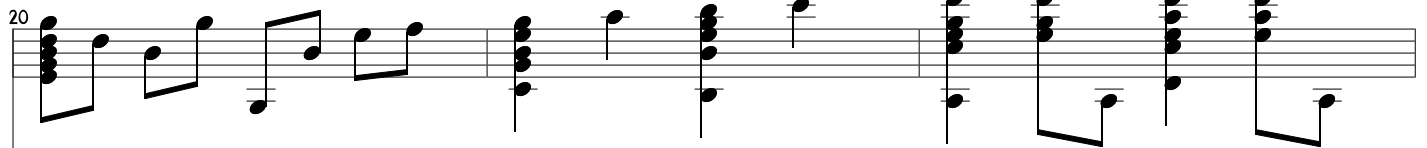
E \flat / B \flat



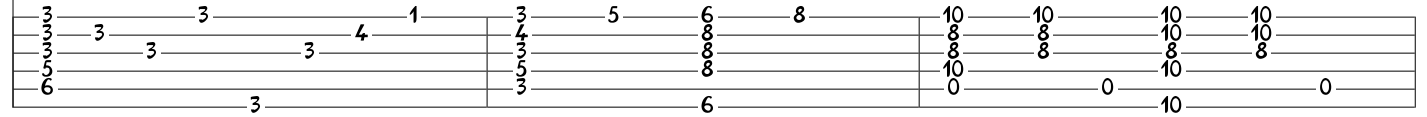
A \flat m7 \flat 5sus



D7 \flat 9



wake I can make my most fan- tast- ic dreams come



Gm7



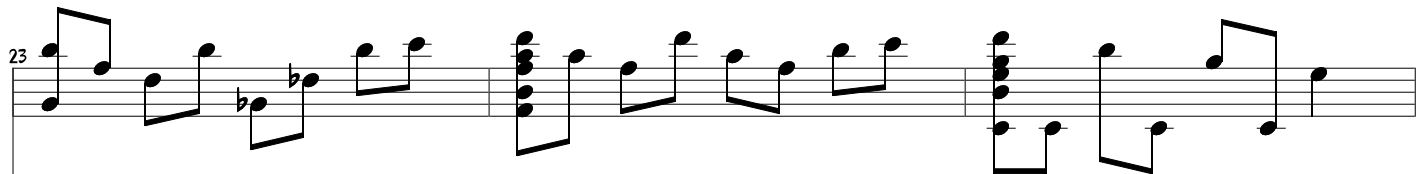
G \flat 7



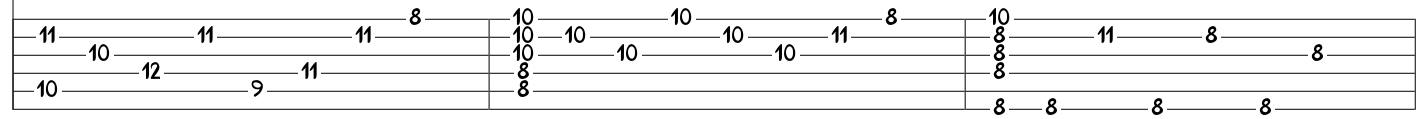
B \flat Maj7 / F



Cm9



true. My ro- mance does- n't need a thing but



B \flat



Cm7



F7 \flat 9



B \flat Maj13



you.

